



FUKE

FK CT-2000T



FK CT-2000T

Model

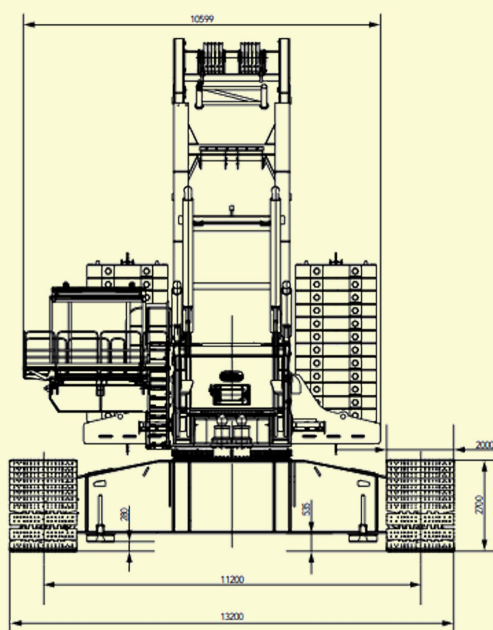
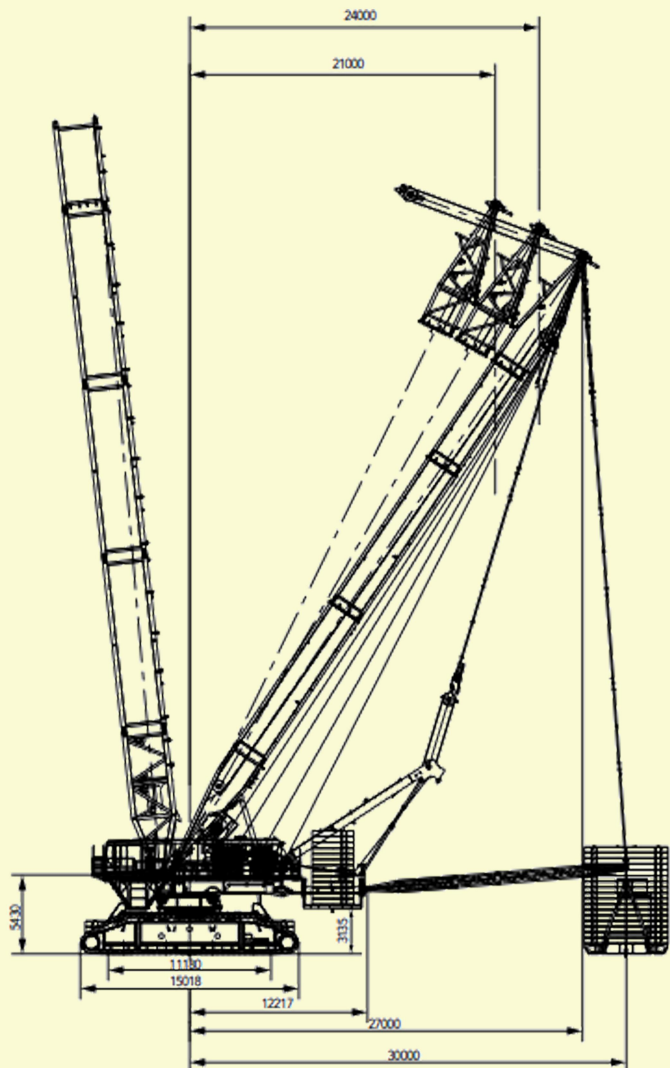


Max rated lifting
2000t

Main arm length
54-108m

Traveling speed
0-1.02km/h

Gradeability
10%



► performance index

Maximum rated lifting weight: 2000t

Maximum rated lifting torque: 28000tm

Main arm length: 54-108m

Mix main arm length: 36-108m

Overmast length: 50m

Overshoot radius: 21/24/27/30m

Longest main arm + longest secondary arm: 108-108

Longest super arm: 60m

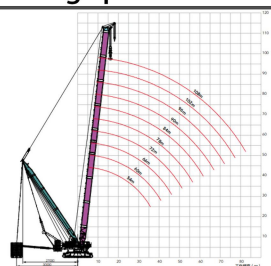
Maximum engine torque: 4629(1300rpm) N · m

traveling speed: 0-1.02km/h

gradeability: 10%

Rated engine output: 746/1800kw/rpm

rotating speed: 0~0.82/0~0.41r/min



臂长 / 半径 (m)	54	60	66	72	78	84	90	96	102	108	臂长 / 半径 (m)
9	2000										9
10	2000	1586	1433								10
11	1920	1584	1433	1262	1119						11
12	1840	1583	1433	1262	1119	995	884				12
13	1792	1545	1433	1262	1119	995	884	790	708		13
14	1746	1507	1410	1262	1119	995	884	790	708	637	14
15	1714	1472	1409	1262	1119	995	884	790	708	637	15
16	1667	1438	1408	1262	1119	995	884	790	708	637	16
17	1570	1405	1383	1262	1119	995	884	790	708	637	17
18	1483	1373	1356	1255	1119	995	884	790	708	637	18
19	1425	1346	1327	1224	1119	995	884	790	708	637	19
20	1336	1320	1299	1194	1099	992	884	790	708	637	20
22	1214	1209	1206	1155	1069	973	875	789	708	637	22
24	1111	1107	1104	1099	1036	953	862	781	705	636	24
26	1023	1020	1016	1012	1010	931	850	774	700	633	26
28	924	945	942	937	935	910	838	766	696	629	28
30	839	880	876	872	870	866	818	757	691	625	30
32	774	814	819	815	812	808	789	736	682	621	32
34	712	744	748	764	762	758	755	715	674	617	34
36	662	687	718	719	716	712	710	691	650	602	36
38	614	633	663	678	676	672	669	665	628	588	38
40	567	597	617	638	639	635	633	629	608	569	40
44	483	524	534	556	572	572	569	565	563	533	44
48	408	452	476	487	504	512	516	512	510	501	48
52		389	422	435	446	456	464	465	465	461	52
56			369	391	398	407	416	419	420	420	56
60			318	346	361	363	374	378	380	381	60
64				302	324	330	336	342	345	347	64
68					287	302	305	309	314	317	68
72						270	280	279	284	288	72
76							255	258	258	263	76
80							226	237	237	239	80
84								212	219	219	84
88									199	202	88
92										186	92
96										168	96

安徽福客重工有限公司
Anhui Fuke Heavy Industry Co., Ltd.

website: <https://construction-equip.com>

whatsapp: +8613505697380

Address: Room 405, Building B-4, East Side
of Dazhong Road, Cuozhen Town, Feidong
County, Hefei City, Anhui Province